

USER MANUAL

A step by step user guide to getting started with DotAir. A wireless data transfer device.

PRODUCT OVERVEIW

Product Name

DotAir

Product Type

Wireless Data Transfer Device

Connectivity

Wi-Fi 2.4 GHz, USB 2.0

Introduction

DotAir is a pocket-sized wireless device that simplifies file transfer and storage—both online and offline. Acting like your personal cloud, it lets you upload, manage, and delete files securely through a simple web interface. Designed for professionals, businesses, and educational setups, DotAir replaces the need for USB drives and offers seamless access across multiple devices—anytime, anywhere.

Product Overview

DotAir is a portable, Wi-Fi-enabled storage device built for secure and effortless file management. It enables wireless file upload, storage, and access—without any physical connections. With both offline mode for same-network transfers and cloud-based management via a dedicated web portal, DotAir is ideal for personal, industrial, and institutional use. Its intuitive interface allows users to connect to Wi-Fi, manage files remotely, and keep data safe—anytime, anywhere.

Setting up DotAir

Step 1 : Plug in the DotAir

- Connect DotAir to a USB port.
- Open Wi-Fi networks on your device and • connect to DotAir_00:00:00 using the password 147852369.

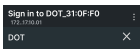
Step 2 : Provide network to DotAir

- A notification will pop up on your screen. Alternatively, scan the QR code or access the URL 172.17.10.1/_ac in browser to open the portal.
- After opening the portal, click the menu button (3-line icon) to access menu items.



Setting up DotAir

- After the portal opens, a similar screen should appear.



- Click the menu button (three-line button) to view the menu options after the portal has opened.

- There are total 5 items in menu: Connect to Wi-Fi, Change Wi-Fi, Restart , Offline Mode, Connection Status.

Connect to Wi-Fi

- When you select the connect to Wi-Fi menu item, available nearby Wi-Fi networks will be displayed.



- Select your preferred Wi-Fi network, then fill in the passphrase field with the corresponding password. then select the "Apply" button.
- It will then begin connecting to the specified WIFI connection. As you establish a connection with the network, the page will appear as follows:



After a successful connection, the network name will be displayed to indicate or show the established connection.

Change Wi-Fi

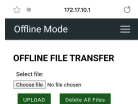
- All of the saved Wi-Fi networks will be presented under the "Change Wi-Fi" menu item. It is possible to switch WiFi networks without inputting the password. Following a successful connection, it will be stored.

Restart

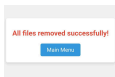
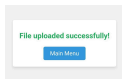
- It does what its name says—it will restart the device. It will return to its initial or typical state.

Offline Mode

- In this mode, you can upload files to DotAir without an internet connection by connecting over the same local network.



- When you choose the "Choose File" option, a dialog window allowing you to browse and pick files from your device will appear. Select the necessary file, go to it, then click "Open" to start the upload. Click the "Upload" button to upload a file.
- The file uploading process will begin as a result. A confirmation message stating that the file was successfully uploaded will show up after the upload is successful.
- Click the "Delete All Files" option to remove every file from DotAir. All files saved on DotAir will be permanently deleted by doing this. Before choosing this option, please make sure you want to delete all files since once you do, there is no turning back.



Connection Status

The Connection Status indicator informs you of your current Wi-Fi connection status, as well as which specific Wi-Fi network you are connected to. If you are connected, the status will display the name (SSID) of the Wi-Fi network. If you are not connected, the status will show that you are disconnected. This information helps you ensure your device is properly connected for optimal functionality.

Cloud Based File Transfer

Disconnect to the DotAir, and open DotAir dashboard to upload the files with the URL : dotair.in or scan the QR Code.



Here's an overview of how the dashboard will look like Whenever the device is either not powered on or not connected to a Wi-Fi network, the dashboard will display the status as "Device Offline." This indicates that the device is not currently active or connected to a network, and therefore you may not be able to access or manage its contents. On the other hand, when the device is powered on and successfully connected to a Wi-Fi network, the dashboard will show the status as "Device Connected." This status confirms that the device is active and you can proceed with managing your files and settings

MANAGE FILES

[HOME](#) / [MANAGE FILES](#)

Device

Device #1

 JotAir

Connection Status

 Online Refresh

Select File

 No file chosen

Uploaded Files

No Files Found



FAQs

1. What is the warranty period for DotAir, and are there any fees after that?

DotAir comes with a 1-year warranty. After one year, if the device is damaged, it can be repaired at a nominal charge. A cloud maintenance charge of ₹700 per year will apply for continued access to the portal

2. Can DotAir be used for personal storage?

Absolutely, DotAir is perfect for both professional and personal use, keeping your digital content organized and accessible.

3. Can I manage multiple DotAir at one instance?

Yes, you can manage multiple DotAir simultaneously through a single dashboard, making it easy to organize your data.

4. What is the storage of DotAir?

The storage capacity of DotAir is 4GB.

Product Disposal

DotAir contains electronic components that must be disposed of in accordance with local laws and regulations regarding electronic waste. Do not dispose of DotAir in household waste. Please recycle through approved facilities.

Safety Instruction

Do not expose DotAir to water or moisture.

Avoid overheating the device. Ensure proper ventilation when operating.

Disconnect the power supply before handling or modifying the device.

DotAir is not a toy; keep it away from children.

Return Policy

DotAir is a non-refundable product. It cannot be returned or exchanged after purchase. However, if any issue arises during the warranty period, the device will be repaired free of cost as per the warranty terms. In case of damage after the warranty period, nominal repair charges will apply.

Trademark and Copyright Information

DotAir and the DotAir logo are registered trademarks of DNK TECH LLP. All rights reserved. The contents of this guide, including all text and images, are the intellectual property of DNK TECH LLP and are protected by copyright laws. No part of this material may be copied, reproduced, or distributed in any form without prior written permission from the company.

Limitation of Liability

Under no circumstances shall DNK TECH LLP or its affiliates be liable for any indirect, incidental, consequential, special, or exemplary damages arising out of or in connection with the use of DotAir, whether the action is in contract, tort, or any other legal theory, even if DNK TECH LLP has been advised of the possibility of such damages.

End – User License Agreement (EULA)

By using this product, you agree to the terms and conditions outlined in the EULA. The software included with DotAir is licensed, not sold, and is provided for use solely with DotAir hardware. You may not modify, reverse-engineer, or distribute the software without express permission from DNK TECH LLP.

Contact Information

For any inquiries, support, or warranty claims,
please contact us at:

Email

info@dotair.in

Support

+91 9737369993

Address

Surat, Gujarat